









Kākāpō

3 Bdrm / 159m²

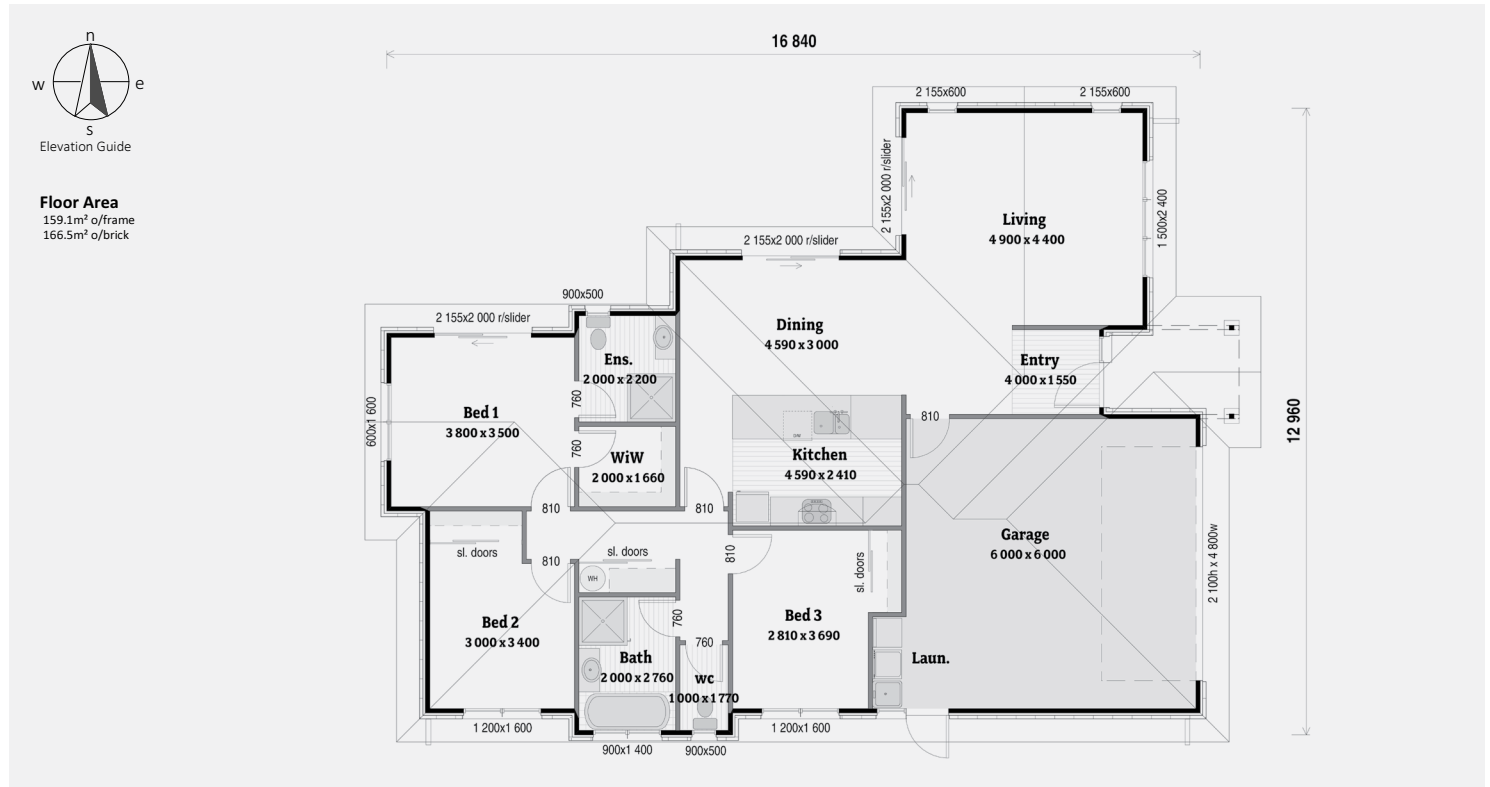
Welcome home. From the front entrance, Kākāpō is all about connection and warmth. You get generous living space in a footprint that is small enough to be suitable for a standard city section.

-  3 BEDROOMS
-  2 LIVING ROOMS
-  2 TOILETS
-  1 BATHROOM
-  2 CAR GARAGE
-  1 WALK-IN ROBE
-  1 ENSUITE
-  ✓ LAUNDRY



KEY FEATURES OF THIS HOME

- Brick veneer and weatherboard cladding
- Open plan living
- Double garage

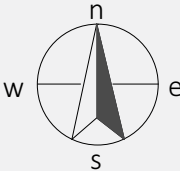


Always check the LBP Register to ensure your building practitioner is licensed.

Certified Plans are brought to you by Certified Builders - New Zealand's Most Qualified Builders.

www.certifiedplans.co.nz

Kākāpō 3 Bdrm / 159m²



Elevation Guide

Floor Area
 159.1m² o/frame
 166.5m² o/brick

