

Tororaro

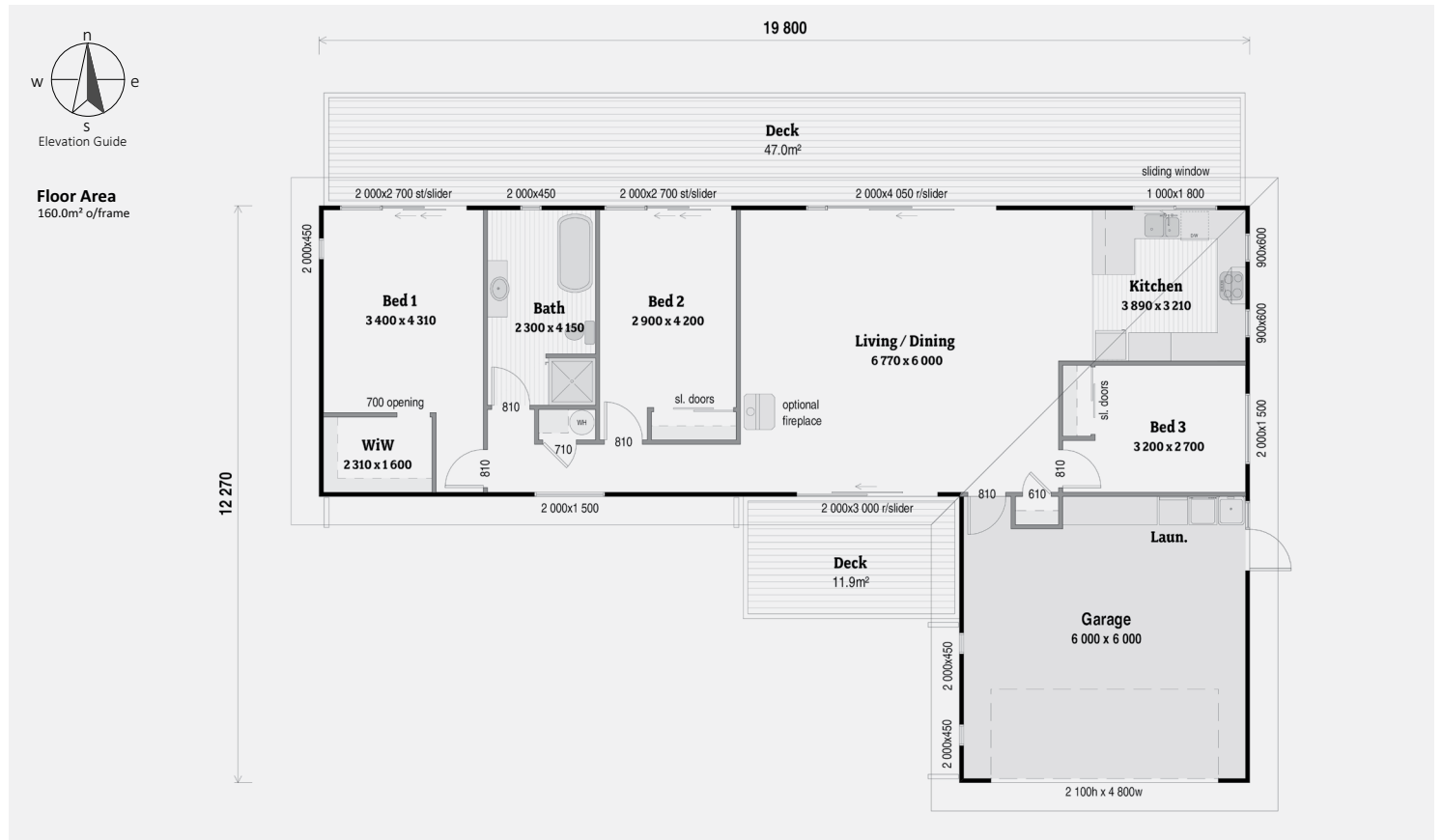
3 Bdrm / 160m²

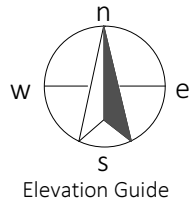
Simple yet effective design makes highly efficient use of space, with open plan living/dining/kitchen, and decking the full length of the back of the house. The design is easy to tailor to your needs, and the functional bathroom is ideal for a young family.



KEY FEATURES OF THIS HOME

- Bevelback weatherboard cladding
- Open plan living
- Flexibility to be a transportable home
- Double garage





Floor Area
160.0m² o/frame

