

# Kahikatea

3 Bdrm / 353m<sup>2</sup>

This wonderful home offers the same floor layout as the Rimu. However, Kahikatea has a sleek alternative roofline – with a combination of mono pitch and gabled roof. It's a distinctive point of difference that creates a timeless look of elegance.

## KEY FEATURES OF THIS HOME

- Weatherboard cladding
- Designa Schist columns
- Open plan living
- Separate formal lounge
- Sheltered laundry entrance
- Triple garage



3 BEDROOMS



3 LIVING ROOMS



3 TOILETS



1 BATHROOM



✓ STUDY



3 CAR GARAGE



1 WALK-IN ROBE



2 ENSUITES



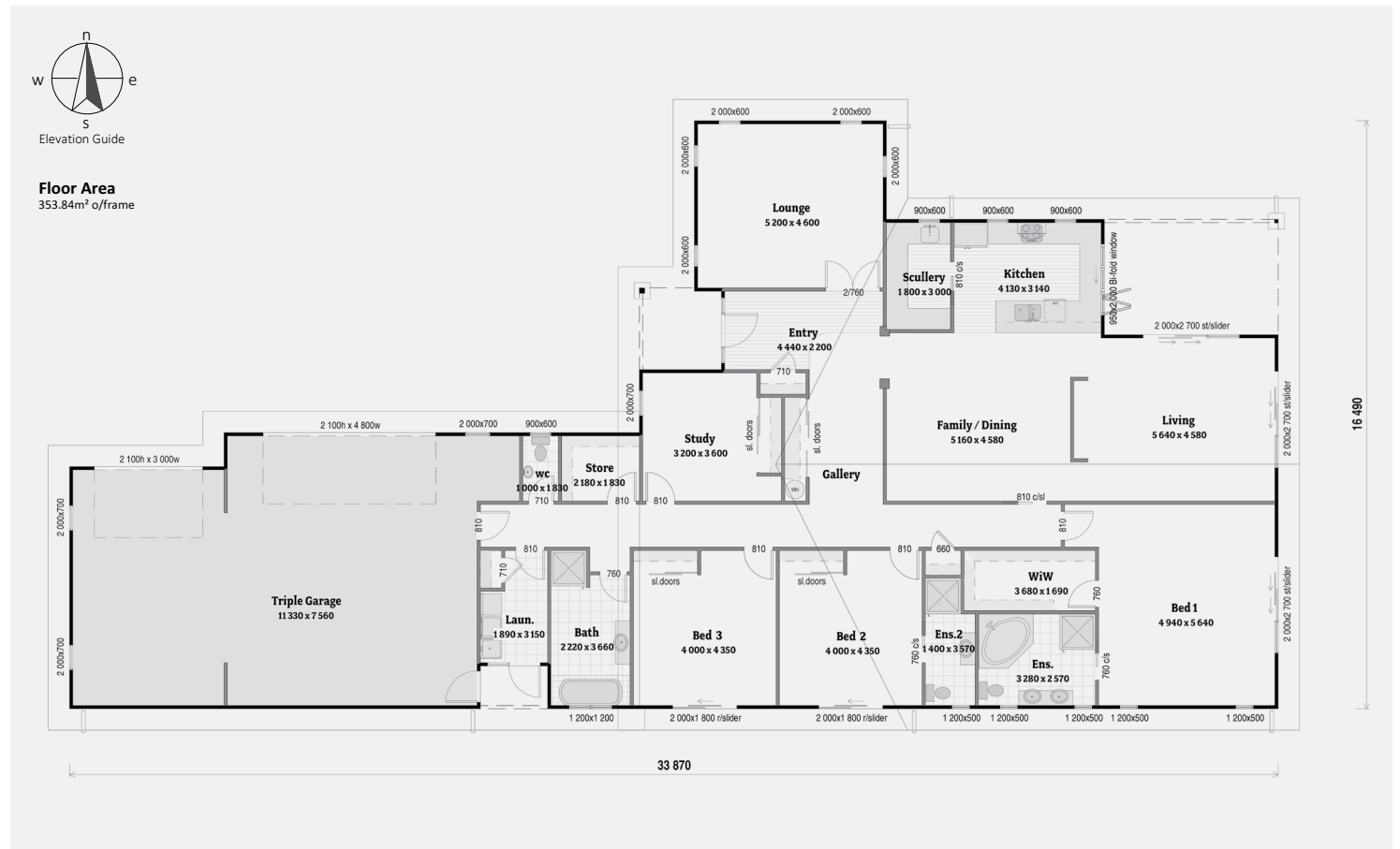
✓ SCULLERY



✓ SEPARATE LAUNDRY



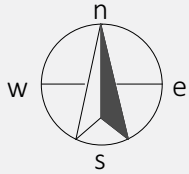
Artists Impression Only



Always check the Register to ensure your building practitioner is licensed.

Certified Plans are brought to you by Certified Builders - New Zealand's Most Qualified Builders.

[www.certifiedplans.co.nz](http://www.certifiedplans.co.nz)



Elevation Guide

**Floor Area**  
353.84m<sup>2</sup> o/frame

