

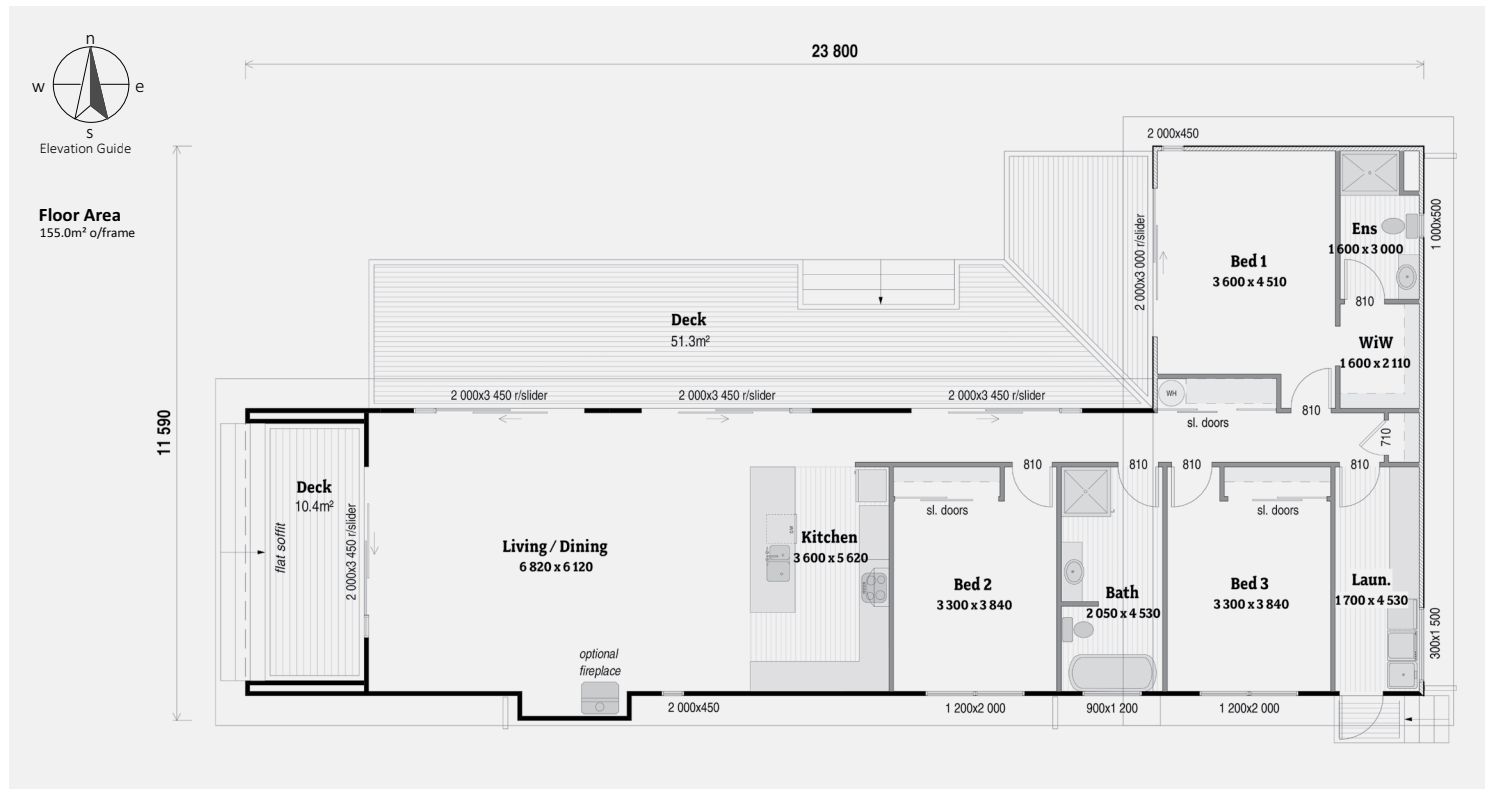
3 Bdrm / 155m²

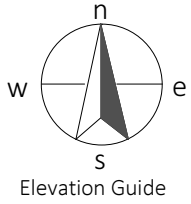
Stylish, yet casual... that's Nikau. The design is perfect for outdoor living, with a double deck that allows a cosy retreat from the weather. The large and practical laundry/bathroom is ideal for a teenage family while an open plan kitchen draws the outside in.



KEY FEATURES OF THIS HOME

- Bevelback weatherboard and ply/batten cladding
- Open plan living
- Large entertainers deck





Floor Area
155.0m² o/frame

23 800

